

TIPOLOGIA A2
INT. 15

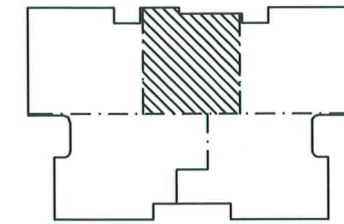
● SUPERFICIE AUTORIMESSA MQ 29.60

● SUPERFICIE ABITABILE

Piano interrato mq 16.70
Piano terra mq 32.10
Piano primo mq 40.00
Piano sottotetto mq 9.75
TOTALE MQ 98.55

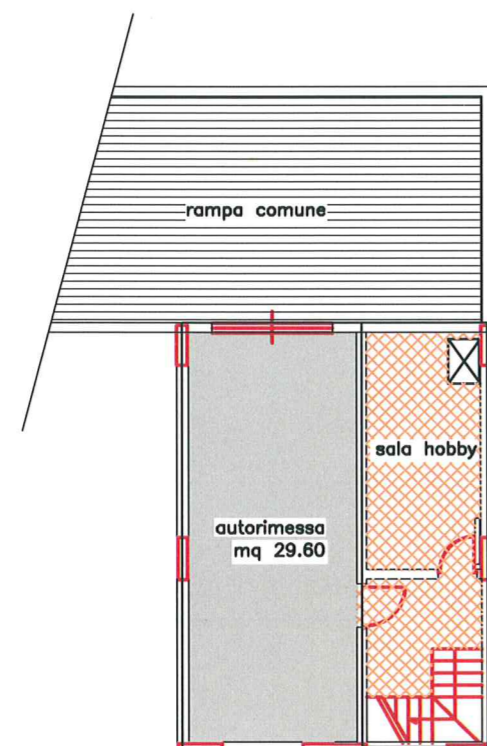
● SUPERFICIE ESTERNA

Giardino - portico
mq 16.00+5.60+19.60=mq 41.20
Balconi mq 11.65
TOTALE MQ 52.85

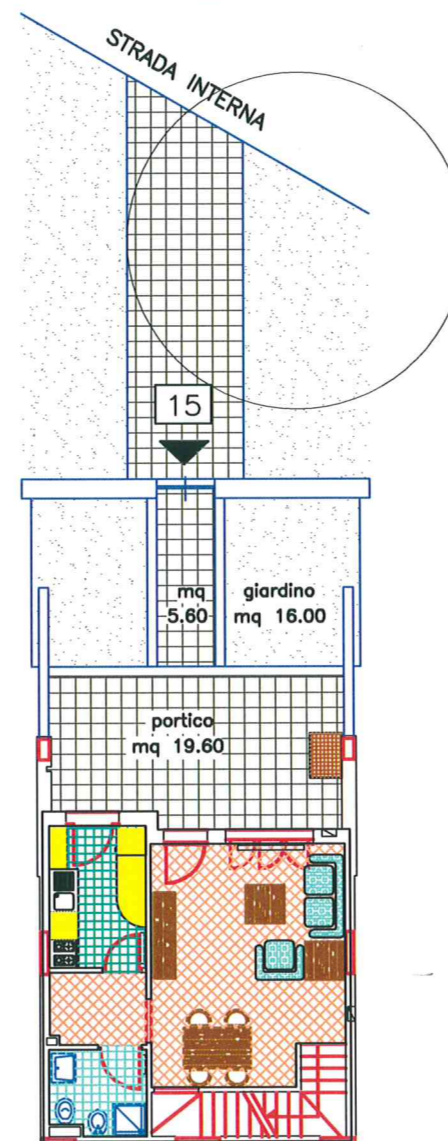


VIA G.F. MALIPIERO

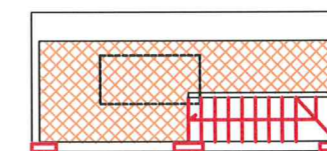
SUPERFICIE COPERTA AUTORIMESSA MQ 32.79
SUPERFICIE COPERTA SALA HOBBY E DEP. ATTREZZI MQ 22.74
SUPERFICIE COPERTA PIANO TERRA MQ 41.99
SUPERFICIE COPERTA PIANO PRIMO MQ 49.50
SUPERFICIE COPERTA PIANO SOTTOTETTO MQ 12.89



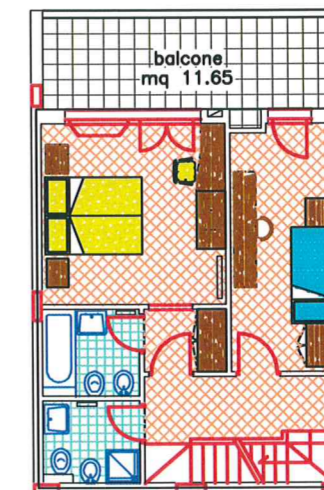
PIANO AUTORIMESSA



PIANO TERRA MQ 32.10



PIANO SOTTOTETTO
MQ 9.75



PIANO PRIMO MQ 40.00